



Allandale Neighbor

April 2023
Vol 38, Issue 2

Distributed to more than 4,900 homes by the Allandale Neighborhood Association

CONTENTS

President's Letter2

Neighborhood Schools Report4

Child's Play at Grace Garden: It's Natural!
.....9

Voodoo Donuts 10

Asahi Imports 13

Quick Bites 14

ANNOUNCEMENTS

Lettuce Recycle

Dena Houston

Spring Is Here! Let the Cleaning Begin
Spring energizes us from the winter doldrums; we feel compelled to spring clean! Cleaning and reorganizing always present a recycling and reuse challenge. This issue of Lettuce Recycle will help with these challenges.

What To Do With All That Stuff?

Assistance League - Housewares in good condition (glasses, pots and pans, dishes) are always in demand at the Assistance League: assistanceleague.org/austin/thrift-shop

Austin Reuse Directory - austinreusedirectory.com. This is a wonderful resource, compiled by the City of Austin, to find out where to donate items in your area.

Buy Nothing - The Buy Nothing Project is a global network of community groups that encourages giving away (without selling or bartering) consumer

goods rather than throwing things away. It is accessed through Facebook and organized by neighborhoods. For more information on the project, go to: buynothingproject.org.

The Recycling & Reuse Dropoff Center (RRDOC) – There are many items that can be taken here. Please see the partial list below. To make an appointment, go to: austintexas.gov/dropoffschedule

- batteries
- chemicals (e.g. pool chemicals, pesticides)
- children's pools

CONTINUED ON PAGE 5

Allandale Parks Report

Mary Fero

It Feels Like Summer! When Does the Pool Open?

If you've been to Beverly S. Sheffield Northwest Park lately, you will have noticed that the pool is full and the maintenance staff is getting things ready for summer swim season. Although a definite opening date hasn't been set, PARD staff are hoping that a mid-May opening might be possible. As with other

Moving Art: Transcontinental Pop Art Photography

Steve Oleson

My mother was an artist, so it is not surprising that I've followed her lead. I got a Bachelor's degree in photography in the 1970s, when professional photography was more than point-and-shoot. I was a professional photographer and exhibited my art

CONTINUED ON PAGE 3

CONTINUED ON PAGE 6



Follow us on
Facebook!

Allandale Neighborhood
Association
and Allandale Neighbors

The Allandale Neighbor

is published bimonthly by the
Allandale Neighborhood Association (ANA)

www.allandaleneighbor.com

EDITOR Tara Lane Bowman
ADVERTISING 512-348-8ADS
allandaleneighbor@gmail.com
DESIGN Raleigh Savage
PRINTER Worley Printing

A SPECIAL THANKS TO OUR
ADVERTISERS AND
CONTRIBUTING WRITERS

CONTACT INFORMATION
Allandale Neighbor,
PO Box 10886, Austin, TX 78766-1886
allandaleneighbor@gmail.com

ANA Board of Directors

PRESIDENT Hans Magnusson
VICE PRESIDENT Janis Reinken
TREASURER Nicko Burnett
SECRETARY Julie Peckham
BOARD MEMBERS Chris Barnard
Mary Fero
Nathalie Frensley
Cynthia Keohane
Becky Reedy
John Tate
Carlene Wegman Todd

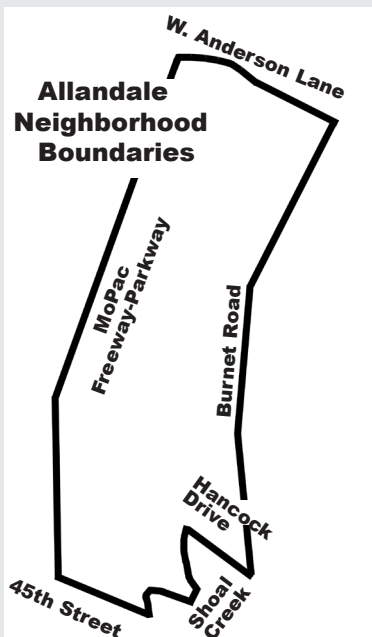
ANA Executive Committee meetings are held on the first Wednesday of the month at NW Rec Center. General Membership meetings are held in April and October. (Meetings are currently held via Zoom)

Committees

BYLAWS TBD
COMMUNICATIONS Sarah Torchin and
Kaylee Romantic
FINANCE Nicko Burnett
MEMBERSHIP TBD
NOMINATIONS Janis Reinken
PARKS Mary Fero
SAFETY Carlene Wegman Todd
ZONING & PLANNING Nathalie Frensley
AUSTIN NEIGHBORHOODS COUNCIL REP Caroline Reynolds

Allandale Police District Rep.

Officer James Hyatt, 512-974-6894
james.hyatt@austintexas.gov



President's Letter

Hans Magnusson, ANA President (512) 522-8773, ana@hmviking.com

Dear Allandale Neighbors:

We had a great group of volunteers to clean up our park on March 4, It's My Park Day. Most challenging was hauling up a waterlogged mattress from the creek up to the Greenlawn Parkway bridge. It was very heavy, and it took half a dozen people to accomplish the task.

In a disappointing vote City Council approved the eTOD (equitable Transit Oriented Development) policy, or shall we say Council adopted the policy of making egg-toddy of our neighborhoods.

Transit Oriented Development is defined in the land development code and prohibits various businesses and single-family homes. The "equitable" - - TOD policy adopted by Council classifies bus stops along Burnet Road as midway or gateway TODs.

Draw a circle of half- to two-miles radius around a bus stop and call it an eTOD. The rationale is to create a district to provide affordable housing along Burnet Road and to get people to use mass transit. If your house is in that circle, it is no longer in compliance with city code. There are so many bus stops along Burnet Rd that eTOD overlays cover all of Allandale. Nobody in the Allandale neighborhood would be "in compliance." In one swoop, around two billion dollars of real estate could be non-compliant.

Transit developments are long term and slow projects, and maybe we should give City Council some slack for not having updated the eTOD policy plan. It's as if the Council hasn't noticed that we went through two years of a pandemic with the consequence that work and commute schedules have since changed radically in most offices. The basis for the original transit plan is likely obsolete.

Many workers these days go into the office a couple of days a week and have flexible hours. When they commute by car the post-pandemic traffic is not as terrible as before the pandemic. Why would workers give up a house in the suburbs to move into a one- or two-bedroom apartment, and pay more than their mortgage in rent, for the pleasure to ride the 803-bus? I ride the 803 myself on occasion and I appreciate that it is available, and it is convenient to get to the Domain or downtown from Allandale. But it does add thirty minutes to my twelve-minute commute when I go by car.

Why would the council want to destroy a neighborhood with single family homes and displace those people? Is it that as one council member stated, and I paraphrase, revenge for policies adopted in the 1920s, or is it to force you in desperation to sell your property cheaply to developers? Perhaps it is both and it is making me angry, and it should make you angry too. The ploy of using the term "affordable housing" is just that. Developers can pay a fee to avoid having affordable units and that is why I don't buy the adopted policy. It is a bait-and-switch policy. Some people whine about NIMBYism when opposing the eTOD plan. I'm not impressed. Give us an honest plan with clear goals and then we can discuss reasonable development that enhances neighborhoods including affordable housing.

Get involved! District 7 Council Seat is open in 2024 due to term limits.

Hans ☘

The *Allandale Neighbor* is published and distributed bimonthly by the ANA. Contact our ad coordinator at 512-348-8237 or allandaleneighbor@gmail.com for more information.

Your Ad	Size	One time rate
Full Page	7½ x 9¾"	\$320
1/2 Page	7½ x 5	\$225
1/4 Page	3⅝ x 4½	\$116
Business Card	3⅝ x 2	\$72

We prefer digital files, at least 300 pixels (TIFF or PDF best). We can create or alter your ad for a nominal charge. For an additional \$60 we will create an online ad to place on the Allandale web site: www.allandaleneighbor.com.

* a 10% discount is offered on three or more ads.

Allandale Parks Report

CONTINUED FROM FRONT PAGE

pools across the city, opening dates and times will depend on having enough lifeguards to open safely. Meanwhile, the city is busy recruiting, and efforts to entice more applicants include a boosted pay scale and training stipend. Minimum pay is \$20/hour; those at least 15 years old may apply. Details are available at: LifeGuardAustin.com

Ice Storm Danger Still Present

It's hard to imagine talking about swimsuit weather while still dealing with the effects of the winter ice storm. Although city crews, private contractors

and individuals spent weeks clearing debris, many damaged trees remain in the neighborhood – and in the park. Most of the heavily utilized areas of the park have been cleared, but fallen limbs and some entire trees in various stages of collapse remain. This is particularly apparent on the wooded hillside across from the playground. Please be aware of these potential hazards, and pay careful attention to children in these areas. We hope that maintenance crews will be able to address these concerns in the near future.



Safety Cautions Continue

Car window smash-and-grab incidents continue to occur in various parking lot

CONTINUED ON PAGE 8

Here to guide you through today's real estate market.

COMPASS

Jason Heffron
REALTOR® | Allandale Resident
jason.heffron@compass.com
512.658.8822

JUICE

juice Real Estate Group is a real estate team affiliated with Compass. Compass is a licensed real estate broker and abides by federal, state and local laws. Equal Housing Opportunity.

Letters to the Editor:

We'd love for readers to submit ideas and articles.

allandaleneighbor@gmail.com

Neighborhood Schools Report

Tara Lane Bowman

Gullett Elementary

The Gullett Art Show takes place on Friday, April 28 starting at 5:00 p.m. On May 22, Gullett will host a talent show from 6:00-8:00 p.m. On the last day of classes, May 25, the fifth grade students will participate in a promotion ceremony at 8:00 a.m.

Highland Park Elementary

Are you a proud current or former Scottie? Want to buy merch or a yearbook? Go to bit.ly/3Zz12EU. Proceeds benefit the HPPTA. The Highland Park Archery team, coached by Jim DeLine, placed first among elementary schools at the National Archery in Schools Program (NASP) tournament.

Lamar Middle School and Fine Arts Academy

The Lamar Archery team, coached by Jim DeLine, placed second in the middle school division at the NASP tournament. An advancement ceremony for eighth graders will be held on May 25.

McCallum High School

Mac PTSA requests donations to their general fund. They hope to raise money to fund Link Crew, a freshman transition program that will give juniors and seniors leadership opportunities and build the student community. Go here to donate: bit.ly/3Zu1F2J ✳

Interested in
ad space?
We have
reasonable rates!

Plus you'd help
support
this newsletter.

Reach us at

allandaleneighbor@gmail.com

or 512-348-8237.

Join ANA Today!

Annual membership dues are just \$10-\$20 per household.

visit www.allandaleneighbor.com to join
or check your membership status



BE A
PART
OF THE
MAGIC!



JUNE DANCE RECITAL 2023

PERFORM ON
STAGE AND DANCE
TO YOUR FAVORITE
MOVIE HITS!

Classes for Ages 2-17

Ballet - Jazz - Tap - Hip Hop
Modern - Acro

DANCE
DISCOVERY

ALLANDALE

 @dancediscoveryofaustin

austin-dance.org
(512)419-7611

Lettuce Recycle

CONTINUED FROM FRONT PAGE

- electronics
 - lawn equipment such as old lawnmowers, weed eaters
 - microwaves
 - plastic lawn chairs and furniture
 - playground equipment
 - refrigerators
 - styrofoam
 - televisions
 - *toiletries like shampoos, lotions, soap, bottles from hotels (even half-full containers)
 - trash cans
 - window air conditioning units
- *These are accepted and placed with the Austin ReUse Store. The ReUse store is free for everyone.

What To Do With Special Items

- Arts and crafts supplies – Austin Creative Reuse: austincreativeuse.org
- Batteries – Household batteries, including rechargeable, can be recycled at most Austin public libraries. They can also go to the RRDOC.
- Gardening items – As we fill our gardens with lovely flowers and vegetables, we are left with the plastic

flower pots and trays we get from the garden centers. All of those can be put into your blue recycling bins (shake the dirt out first).

- Shredded paper – This needs to go into the green compost collection bin (not the blue recycling bin). It must be contained in a compostable or paper bag.

Cleaning Tips

- Paper towels with any kind of cleaning product must go into the trash and not into the compost cart.
- Washable (reusable) dusters are available. Very handy for all the dusting during our spring clean-up.
- Vacuum cleaner contents and disposable bags are not compostable and must go into the trash can.

Reader Q&A

1. Can I put recyclables in a paper bag before I put them into the blue recycling bin?

No, do not bag recyclables. Bagged recyclables will be sent to the landfill. There is not the manpower at the recycling center to empty these bags.

2. Do I have to remove the cellophane window in envelopes before I put them into the blue bin?

No, you do not. Even the plastic on top of Kleenex boxes can be left on.

3. How do I recycle aerosol cans?

Aerosol cans (full or partially full) are accepted at City of Austin Recycle & Reuse Dropoff Center. The material in them is considered hazardous; do not put it into the blue recycling bin. Completely empty aerosol cans may be put into the blue recycling bin.

4. What happens to batteries when they are collected at the Recycle and Reuse Dropoff Center?

Batteries are separated by type (single use, rechargeable, etc.). The metal casings are recycled and the zinc oxide is used to make other items (as in sunscreen). The potassium hydroxide in the alkaline batteries is used in the water treatment chemical industry. Lithium batteries are used to manufacture new lithium-ion batteries.

Here is a very informative City of Austin recycling website that explains what to do with various unwanted items: austintexas.gov/whatdo

Stay tuned for future tips that will include creative ways to recycle or reuse. If you have any questions or recycling ideas, please send them to: denahouston3309@gmail.com. ☼

HECHO EN TEJAS

Eldorado

CAFE

Breakfast tacos! For you, your family, the teachers or work. We got you covered.

Curbside & delivery, Tuesday – Sunday
Breakfast: 9am-1pm
Lunch/Dinner: 11am -9pm

3300 W. ANDERSON LN • AUSTIN, TX

EldoradoCafeATX.com | 512.420.2222



Champion Commercial

Reduce your rent, save money, get the best space.

- Lease renewal negotiations
- Office site selection/relocation
- Commercial purchases
- Restructure existing leases

Bill Anderson
Allandale resident.
Experienced commercial real estate broker representing tenants and buyers.

**Winning Strategies
For Commercial Real Estate**

512-501-1807
bill@championcre.com

Moving Art: Transcontinental Pop Art Photography

CONTINUED FROM FRONT PAGE

photography in galleries through the following years. Now, like most people, I carry my camera with me always: my iPhone.

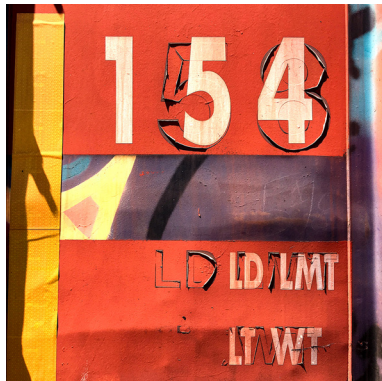
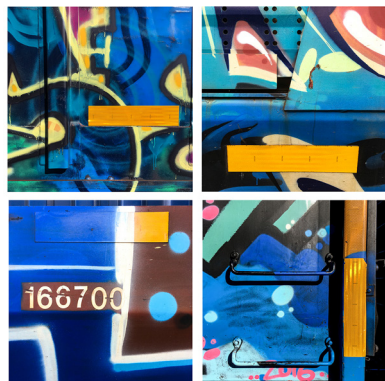


Image of railcar with industrial signage

The quality of photos made by the iPhone amazes me!

Riding my bicycle along Great Northern Boulevard, my eye was caught by the intriguing juxtapositions of the graffiti art and the industrial signage on the rail cars, so I started making abstract compositions with my phone. The first of these photos (2017) were kind of random, but I thought they might make an interesting exhibit. Art exhibits work best if the images have a unifying theme. I decided my “rules of engagement” would be to include at least one safety reflector in each photo, plus graffiti art and if possible, industrial signage. At first, I was mostly attracted to Abstract Art looking compositions. But then, I noticed the occasional ironic and eerie synchronicity on the sides of the rail cars.



Clockwise



Counter Counter Clockwise

The quality of photos made by the iPhone amazes me!

Riding my bicycle along Great Northern Boulevard, my eye was caught by the intriguing juxtapositions of the graffiti art and the industrial signage on the rail cars, so I started making abstract compositions with my phone. The first of these photos (2017) were kind of random, but I thought they might make an interesting exhibit. Art exhibits work best if the images have a unifying theme. I decided my “rules of engagement” would be to include at least one safety reflector in each photo, plus graffiti art and if possible, industrial signage. At first, I was mostly attracted to Abstract Art looking compositions. But then, I noticed the occasional ironic and eerie synchronicity on the sides of the rail cars.

Initially, I kept the images as I found them, with minor alterations of saturation and contrast. By 2021, I made my first quad, a print combining four photos that worked well together. I called it “Clockwise” because the elements in each photo seem to lead the eye in a clockwise motion.

Later, I made “Counter Clockwise” which then led to “Counter Counter Clockwise.”

Lately, I have been making quads that are more thematically conceived than purely graphic.

It is fairly common to see drawings of skulls on the side of railcars. Some are light-hearted and some are horrific. I collected three skull images, but it took many months to find



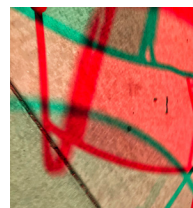
Skulls

the perfect final skull to complete the quad as a memento mori: in the bottom right position.

I made 20”x 20” Giclee prints of the quads on Hahnemuhle Photo Gloss Baryta heavyweight fibre-based photo paper. They are beautiful and look better than photos made with a 35mm camera! If you are interested in seeing them in person, email me at emooleson@gmail.com.

Here’s a fun, short video of the Collaboration photos I have shot along Great Northern Boulevard:

bit.ly/40xcvGd



Shadows Under Lawn Furniture

To me, art is everywhere. I keep my eyes open and my iPhone in my pocket, ready to capture and share.

Allandale is a visual feast.

Note: All images can be seen in color at allandaleneighbor.com/newsletter. ☘

WE NEED YOU

to help on various committees! Email allandale.neighborhood@gmail.com for more info.

All types of positions available

Child's Play at Grace Garden: It's Natural!

Katie McKenna Foley

Allandale neighbors will likely know it as the location of the pumpkin patch each October, but fewer may realize that a bustling, growing, and thriving world for children is located there the rest of the year, too! Grace Garden Preschool, located at Saint John's Methodist Church on the corner of Wynona and White Rock, first opened its doors in 2005. Over the years, Grace Garden has served over 500 families, providing exceptional care for children aged eighteen months – pre-K. The school has become known as a hidden gem in the neighborhood for its commitment to play-based, nurturing, half-day care. In fact, you'll find many Grace Garden "alumni" in classrooms at our neighborhood schools: Gullett, Lamar, and McCallum. Many of our teachers live in the neighborhood as well, adding to the feeling of deep community investment that can be felt at the school.

Recently, you may have noticed some exciting changes on the Grace Garden playground! To complement the school's philosophy that free, outdoor play is essential in the development of a child, the playground has been refreshed to add

natural elements like logs and small boulders, a "loose parts" building zone, and a water pump and rock "riverbed" drain. Children are encouraged to fill up buckets of water and carry them to the mud kitchen for messy, imaginative play.



Child playing with mud in the mud kitchen.

A huge, outdoor paint easel allows for the creation of artistic expressions al fresco.

Tree stumps serve as seating at activity tables, and cedar footbridges create charming transition points in the playground from one area of play to another. All these beautiful additions were intentionally designed to provide more contact with nature and encourage gross motor development as the children learn to navigate the environment. Not to mention, there may be nothing more precious in this world than barefoot, muddy children playing and creating!

On Sunday, April 23rd, Grace Garden and Saint John's will celebrate Grace Garden Sunday with a service at 11:00 a.m., followed by Kona Ice on the playground at Noon. Grace Garden families (past, present, and future!) are especially invited to join, but anyone interested in checking out the cool new playground updates is welcome, too!

For information on Grace Garden, including enrollment inquiries for summer and fall programming, you can visit ggaustin.org or contact the director at info@ggaustin.org. ☼

Celebrate Allandale: Love & Protect It.

40 Year Austin Resident
14 Year Allandale Resident
18 Year Real Estate Agent,
Investor & Flipper

Proud Parent of Students in :

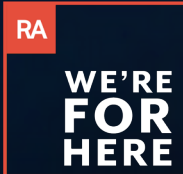


Chad Proctor

512-870-7292

ChadProctor@RealtyAustin.com

www.Allandaleliving.com



An advertisement for Yard Life Pools. The top section has a blue background with the "Yard Life POOLS" logo in white. Below the logo is a photograph of a modern, two-story house with a large swimming pool in the backyard. The pool is surrounded by a wooden deck and has blue lights at the bottom. The bottom section of the ad has a blue background with white text: "We Dig Allandale! Creative Designs. Solid Plans. Quality Builds. 512-520-5005". To the right of the text is a QR code.

Allandale Parks Report

CONTINUED FROM PAGE 3

areas at Northwest Park. These theft attempts cause significant financial damage, yet frequently yield little to no monetary gain to the thieves. PARD staff and board members are aware of neighborhood concern about the escalation of these and other incidents of vandalism (including serious damage within the pool in February and fires set in the park at the end of March), and they plan to meet with our Austin PD liaison to discuss ways to increase safety and security. In the meantime, everyone is strongly urged to remove all items from cars while at the park, as empty bags and other items have been the targets of break-ins.

Awesome Volunteers Bring Smiles, Build Community

The March 4 It's My Park Day event was among the most

successful ever, and it particularly stood out following reduced participation levels during COVID. More than 100 volunteers were on hand for a glorious Saturday morning outing. Teams formed to clean up Shoal Creek, haul storm debris to centralized pick-up points in the park, and paint the cement picnic tables and the beloved playground turtle. These biannual events sponsored by Austin Parks Foundation take place the first Saturday in March and November.

We're looking for volunteers to serve on the Parks Committee and to organize volunteer and educational projects. If you're interested in participating, or if you've got a great idea to suggest, please email us:

allandale.neighborhood@gmail.com.

Have a great Spring! ☘

Below: Volunteers gather for It's My Park Day on March 4.



Volunteers gather for It's My Park Day on March 4.



ORDER
CONAN'S
PIZZA



Voodoo Doughnut

Robert Mace

Many moons ago, we stayed at a random hotel in downtown Portland. When the sun rose, we shuffled out of our room for coffee and breakfast. A block away, by happenstance, was Stumptown and the most memorably good latte we've ever had. And then, down the street, there was Voodoo Doughnut, a shady-looking joint run by what looked like a dissolved goth band. But the

doughnuts were fun (covered in Captain Crunch! is that a slice of bacon?) and decent. Fast forward many (many) years, and Voodoo is taking its dark magic across the country, including, now, at 5408 Burnet.

The Voodoos these days are less shady (and more sweet), but the doughnuts still swing goofily, with Voodoo Bubble (with a piece of bubblegum!); Bacon Maple Bar



The Voodoo Doll at Voodoo Doughnut.

(bacon!); Oh Captain, My Captain (Captain Crunch!); Voodoo Doll (it has a "pin" in it!); Marshall Mathers (covered in M&Ms!); and Ring of Fire (cayenne!). There are also several NSFW doughnuts, including Old Dirty Bastard (chunky!), Maple Blazer Blunt (don't Bogart my doughnut!), Diablos Rex (is that a pentagram?), Butterfingering (hmm...), and the, well, let's refer to it as Rooster N' Spheres (and, yes, it's full of Bavarian crème; thank you for asking). I think it's safe to say that if you are waiting for a Voodoo in Waco, you're gonna be waiting awhile. But vegans rejoice 'cause they got ten vegan voodoos.

The dough is Krispy Kreme style, so puffy and soft. The Voodoo Doll bleeds with raspberry jelly and was quite delish but wasn't nearly as cute as the photo; the Oh Captain and Marshall Mathers looked as advertised, while the Diablos Rex appeared to have been made by an angry Christian. But looks aside, these are all good doughnuts and a fun place to go. Good things do indeed come in pink boxes.

Voodoo Doughnuts, voodoodoughnut.com, (737) 977-6669; full-color review at austinwanderlist.com ☘



Common questions we get:

- How does our spending compare?
- How can we pay less in taxes?
- Is our college fund on track?
- How should we invest our 401k?
- Do we have the right insurance?
- What about wills and trusts?
- Can we afford to remodel or move?
- Should we buy a rental property?
- Should we just use index funds?

Kevin X. Smith, CFA
kevin@austinwealthmgmt.com
 512-467-2003



AUSTIN
 WEALTH
 MANAGEMENT

Independent financial planning and education.
Fee-based fiduciary services.
Zero sales pressure.

TACL#B5235C



☎ 512-450-1980
www.AplusAC.com



**Locally Owned &
 Family Operated for
 45+ Years!**



- Free Estimates on New A/C Systems
- Fast 7-Day A/C Repairs
- Energy Audits
- Duct Repair & Replacement
- Home & Handyman Repairs
- Remodels & Additions
- Senior Accessibility Upgrades
- Painting & Staining
- Drywall & Popcorn Removal
- Decks & Fences / Install & Repairs

\$25 OFF

Any A/C Repair or
 Handyman Service
 Over \$250

*May not be combined with other offers.
 Check our website for additional coupons
 & discounts. Expires December 31, 2023.*



It's been a while, hasn't it?

At Strait Smile Studio, we don't judge. We just want to help your smile be the best it can be. So whether it's been six months or six years since your last check up, we are ready to help you.



STRAIT
SMILE
STUDIO

Taking care
of your smile.

It's easy, call now 512.459.7811

5017 Bullcreek Rd. Austin, Tx 78731



"Calm in the midst of the storm! Rick took care of all of the communications, bumps in the road, and details so we could have a painless, enjoyable selling AND buying experience! We highly recommend Rick for his selfless service, knowledge and savvy. He was in our corner in every situation, making the path smooth. We are now the proud owners of our dream home and the happy sellers of our former home, and we couldn't be more pleased with Rick! Thank you!! HIGHLY recommend!!"

-Kate H

info@layer3realestate.com

512-924-7300

layer3realestate.com



*Roses are Red,
Violets are Blue,
Come in for a check-up,
and a cleaning too!*

- Shoal Creek Dental Care

Shoal Creek Dental Care
8015 Shoal Creek Blvd., Suite 120
512.453.8181
www.shoalcreekdental.com



Camp Vámonos

Camp Vamonos! is enrolling for:

Summer Camp

Monday, May 29--Friday, August 11
(June 12-16 — Mixed Age Mentoring week.
See website.)

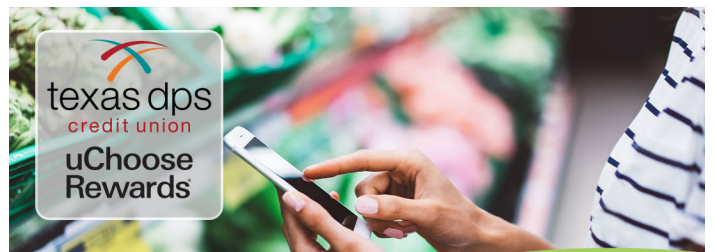
8:30 am--5:30 pm, Monday through Friday
\$210/week

Parents provide lunch and snacks

The camp is run out of a private home in Crestview with a backyard playground. We play, socialize, bake yummy treats, do kitchen science, watch classic movies, play foosball and board games, make art and new friends, and have a fun, silly time. We also do outings on public transit.

Come play with us after school and over the summer! Vamonos!

www.campvamonos.com
megaritob@gmail.com
(512) 770-7789



Introducing the NEW Enhanced Rewards Credit Card

*The essentials you need.
The rewards you deserve.*



Apply today: txdpscu.org

Asahi Imports

Robert Mace

Tucked under one of Northwest Center's blue awnings at 6105 Burnet is a wormhole called Asahi Imports that carries you across the Pacific and into a Japanese convenience store just a step off a random Tokyo side street. Austin's original and sole Japanese-only market has all the foodstuffs, chopsticks, teacups, candies, and cat culture you would expect (30,000 items in all!), but it also has The Onigiri Corner. Beginning in 2013, Asahi started selling onigiri—compressed triangular rice volumes wrapped in seaweed paper with a savory filling—a rice convenience tool popular in Japan since before the invention of chopsticks. Asahi's onigiri was so popular that the store dedicated a small corner to a small army of Japanese ladies churning out not only onigiri but bento, korokke, inari, futomaki, daifuku, and sando, among other items.

The bentos are cute, flavorful, mildly adventurous (for a non-native), nutritious, and just enough for lunch (and “just enough” is exactly what I need these days...). Ahi tails cutely spring from the fried fish while the grilled saba (a meaty mackerel) lay proudly on a bed of greens with a small tomato and a few pods of edamame. Orange cubes of what turned out to be concoctions of yams also graced the bentos. We also took home a chocolate ichiga daifuku, also known as a strawberry mochi, a strawberry surrounded by rice wrapped in chocolate. In short, everything is artful, adorable, and delicious. True to convenience store form, they are take-out only with no on-site eating accommodation.

Asahi's roots go back to Shigeko's Imports on North Loop Boulevard. In the 1980s, Shigeko's name changed to Asahi and then moved to Burnet Road in 2003 (with a southern storefront recently opened down south). Family-owned and now run by the third generation, it truly is a family business and a helluva fun place to visit.

Asahi Imports, asahiimports.com, (512) 453-1850; full-color review at austinwanderlist.com ☞



Zarusoba from Asahi Imports

Springtime is here We ♡ Allandale!

EASTER SPECIALS • OUTDOOR PATIO • TAKE-OUT & CATERING

SANTA

RITA
ATX ★ CANTINA

512 419-7482
santaritacantina.com
1206 West 38th St

34
CAFE
WINE BAR

512-371-3400
34thstreetcafe.com
1005 West 34th St

Quick Bites: Comings and Goings in Allandale

Robert Mace

The biggest foodie news for the 'hood is that H-Mart plans to open at the old Saver's location at 5222 Burnet. H-Mart is a grocery that caters to Asian-Americans and also hosts several restaurants. For example, the existing H-Mart on Lakeline has a dozen food-slingers inside.

Voodoo Doughnut is now open (see review, this issue) as is the Chicago-based, fancypants convenience store Foxtrot (4818 Burnet; on-site food and indoor and outdoor seating). Things are sizzling over at Kitchen United (order.kitchenunited.com/austin) with the openings of Burger & Sons, Pokaii (poké), Pomodoro (pizza), Scooped Cookie Dough Bar, and What the Farm (salads). Pokéworks (3022 West Anderson) opened April 6.

Austin's Very Own Saltt (still not a typo) appears to be close to opening. East Side Pies is also close to opening but will close its Airport location, so my hoped-for decreased delivery time has been brutally thwarted (but they will be closer to my house). Carve American Grille and Verdad True Modern Mexican are actively under construction with spring-summer opening promised. Citing bad weather, staffing costs, and inflation, Fat City Stacks at Yard Bar closed. Also closing was The Violet Crown Clubhouse.

For hotlinks (digital, not sausages from Elgin) and color photos, please visit austinwanderlist.com. Send tips, tricks, and politely-thrown tomatoes to bubba67@mac.com. ☘

JOIN ANA allandaleneighbor.com

EVEN REALTORS MOVE

*Ruth & Evonne
have moved!*

TO BETTER SERVE YOU,
POWERS PROPERTY GROUP
HAS PARTNERED WITH
BRAMLETT RESIDENTIAL.

Same Excellent Service, Same Team
We've made a move, and now we are
ready to help you with yours!



Powers Property Group

— BRAMLETT PARTNERS —

Ruth E. Powers
512.964.3434

Evonne Gottsch
512.810.3189

info@powerspg.com



THANK YOU
ADVERTISERS!

 STUDIO SATYA
YOGA • MEDITATION

Yoga for All Ages &
Experience Levels

Vinyasa • Kids • Hatha • Yin • Teens • Flow • Prenatal
Crawlers & Toddlers • Yoga Nidra • Baby & Me
Stress Management • Pranayama • Meditation

"I've practiced with some of these instructors and the studio for years and I genuinely love being a part of the community they've developed." - J.K.

"Studio Satya is the most truly holistic and embracing yoga community I've experienced, and it's such a privilege to practice here." - A.Y.

EXPERIENCE THE COMMUNITY FOR YOURSELF

IN-PERSON
and ONLINE

1308 West Anderson Lane
Learn More » StudioSatya.com



Allandale Neighborhood Association New or Renewal Membership. Celebrate Allandale: Love It. Protect It.

All residents within Allandale's boundaries are welcome to join the Allandale Neighborhood Association. Annual dues are \$20 per household or \$10 (over age 55 household). Dues may be paid in advance for multiple years.

Name _____
 Address _____
 Phone _____
 E-mail _____

Membership rates: \$20 dues per household \$10 dues per age 55+ household

Please make checks payable to: ANA ■ PO Box 10886 ■ Austin, TX 78766-1886 ■

Or join online via www.allandaleneighbor.com

I am willing to serve on the following committees: Bylaws Communications Finance Membership
 Nominating Parks Safety Zoning and Planning Other _____

PLEASE SUPPORT
OUR ADVERTISERS!

 **Henderson
Plumbing**
452-5963

- ◆ Licensed plumbing repair
- ◆ Clean, personal service
- ◆ 29 years experience
- ◆ Drain cleaning

452-5963
Leave message



SING DANCE PLAY

Music and Movement classes for children from
birth to age 7 and the adults who love them.®

Celebrating
19 Years in
Austin!

**HEARTSONG
MUSIC** 



www.HeartsongMusic.net | (512) 371-9506



Allandale Neighborhood Association
PO Box 10886
Austin, TX 78766-1886

PRSRT STD
ECRWSS
U.S. POSTAGE
PAID
EDDM RETAIL

*****ECRWSS****
Postal Customer
Austin, TX



ASKRACHEL

Clients come first, plain and simple.

Your trusted advisor with market expertise.
Rachel Nation, Broker Realtor
Specializing in Central Austin for over 15 years.

NATIONHOLDINGS.COM 512.514.5458
RACHEL@RACHELNATION.COM

Painting Allandale one neighbor at a time...

- * **Free Estimates**
- * **Reasonable Rates**
- * **Professional Results**

Phone: 791-8114
Bright Spot
Painting / Remodeling